

LUXTRUST

Enabling a digital world



How to unblock your PIN?

Ubuntu | For Smartcard or Signing Stick

Before you start you will need:



LuxTrust device

Your Smartcard or your Signing Stick (with integrated chip)



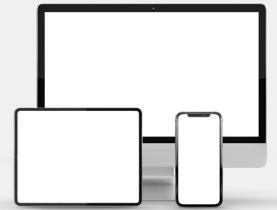
LuxTrust Codes*

Initial PIN, PUK Code and Challenge received by mail (*if needed)



Smartcard Reader*

An electronic device that reads Smartcards (external or built-in) (*if needed)



Middleware

A desktop computer or laptop with the latest version of the LuxTrust Middleware for Ubuntu installed

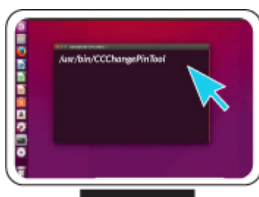
How to unblock your PIN with Ubuntu?

1



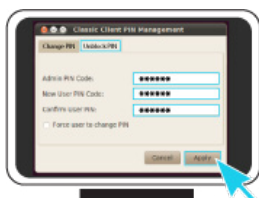
Connect the Signing Stick to a free USB port or insert the Smartcard into the card reader.

2



From your Terminal located in Applications, start the following task:
`/usr/bin/CCChangePinTool`

3



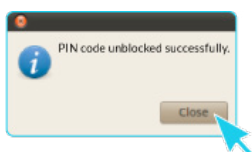
Before you begin, please make sure that the option **Unlock PIN** is selected. Continue with filling in the following fields:

- ▶ **Admin PIN Code:** Enter the PUK code (=Admin PIN) from the **LuxTrust Codes** Document.
- ▶ **New User Pin Code:** Enter a new PIN respecting the PIN Policy instructions.
- ▶ **Confirm New Pin:** Enter the new PIN to confirm.

Your new PIN must meet the following requirements:

- a) must be between 6 and 8 digits long
- b) must be different from the last PIN code you used
- c) must not be in the weak PIN list

4



Click on **Apply** to confirm. A message will inform you if the PIN has been unblocked successfully.



Some advice on choosing a suitable PIN:

- Use an **8-digit** code (maximum allowed).
- Avoid using a **combination of numbers that can be easily guessed**, for example, your date of birth, telephone number etc.
- Avoid using **logical sequences** such as 123456, 12131415, 102030 etc.
- Avoid **repeating the same number several times** such as 222888, 55555555 etc.
- Avoid using **repetitive** or **symmetrical** number patterns such as 01010101, 45674567 etc.
- Avoid using **well-known character sequences** such as 112112, 925925 etc.
- **Never disclose the PIN to anyone.**



Support & Service

Monday to Friday
From 8am to 6pm
Phone: +352 24 550 550
Email: questions@luxtrust.lu



Address

LuxTrust S.A.
IVY Building | 13-15, Parc d'activités
L-8308 Capellen | Luxembourg