



## How to change your PIN?

Ubuntu | Change PIN for Smartcard (Signing Stick)

### Before you start you will need



#### LuxTrust device

Your Smartcard or your Signing Stick (with integrated chip)



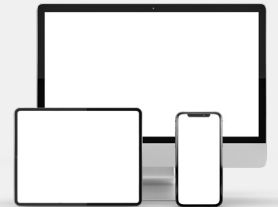
#### LuxTrust Codes\*

Initial PIN, PUK Code and Challenge received by mail (\*if needed)



#### Smartcard Reader\*

An electronic device that reads Smartcards (external or built-in) (\*if needed)



#### Middleware

A desktop computer or laptop with the latest version of the LuxTrust Middleware for Ubuntu installed

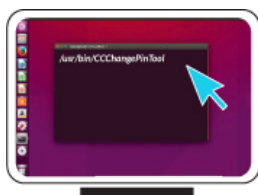
### How to change your PIN with Ubuntu?

1



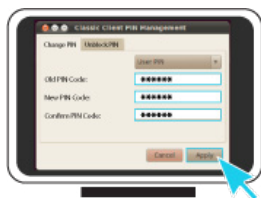
Connect the Signing Stick to a free USB port or insert the Smartcard into the card reader.

2



From your Terminal located in Applications, start the following task:  
**`/usr/bin/CCChangePinTool`**

3



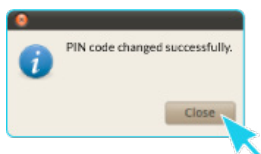
Before you begin, please make sure that the option **Change PIN** is selected. Continue with filling in the following fields:

- ▶ **Old PIN Code:** Enter your current PIN (if the PIN has never been changed before, you must use the Current PIN from the LuxTrust Codes Document).
- ▶ **New PIN:** Enter a new PIN respecting the PIN Policy instructions.
- ▶ **Confirm New PIN:** Enter the new PIN to confirm.

Your new PIN must meet the following requirements:

- a) must be at least 6 characters long
- b) must be less than or equal to 8 characters long
- c) must contain only numeric characters
- d) must not reuse the last PIN code
- e) must not be in the weak PIN list

4



Click on **Apply** to confirm. A message will inform you if the PIN has been changed successfully.



## Some advice on choosing a suitable PIN:

- The **more characters** you use, the **more secure** the PIN will be.
- Avoid using a combination of numbers that can be **easily guessed**, for example, your date of birth, telephone number etc.
- Avoid using **logical sequences** such as 123456, 12131415, 102030 etc.
- Avoid repeating the **same number** several times such as 222888, 55555555 etc.
- Avoid using **repetitive or symmetrical number** patterns such as 01010101, 45674567, 8091908, etc.
- Avoid using **well-known character sequences** such as 112112, 925925, etc.
- **Never disclose** the PIN to anyone.



### Support & Service

Monday to Friday  
From 8am to 6pm  
Phone: +352 24 550 550  
Email: [questions@luxtrust.lu](mailto:questions@luxtrust.lu)



### Address

LuxTrust S.A.  
IVY Building | 13-15, Parc d'activités  
L-8308 Capellen | Luxembourg